



**Industrial / Warehouse**

The VALE Aircraft Hangar 000011 2

# The Vale Aircraft Hangar

New Development

In the north west of Tasmania, The Vale in Sheffield is home to a produce farm and a large private airfield including a 1300 metre grass airstrip that runs along the valley floor. Constructed in 2020, a new hangar was built to house the property's aviation equipment and aircraft assets. A crucial part of the build was ensuring that proper and sufficient lighting was incorporated through a precise lighting design.

At a 7.4m mounting height, an average of 600 lux is achieved throughout the space, providing superior uniform brightness. The premium Venus 200W Highbay was paired with an aluminium reflector to control and reduce the glare that can be present in high light output situations. A Digital Addressable Lighting Interface (DALI) control system was implemented for ultimate versatility and control. DALI is a two-way communications protocol used to provide control over, and communication between the components in a lighting system. It is easy to install and is widely recognised as the global standard for lighting control. The lights and control system are providing an exceptional "shadowless" experience for Simon Hackett at the Vale.

**PROJECT DETAILS**

<b>Location</b>	Sheffield, TAS
<b>Client</b>	Base64
<b>Architect</b>	Neeson Murcutt Architects
<b>Electrical Engineer</b>	Decrolux
<b>Builder</b>	Bison Constructions
<b>Completion</b>	2020
<b>Standard</b>	AS1680 Interior and Workplace Lighting
<b>Average Lux Achieved</b>	600 lux



The VALE Aircraft Hangar 000021



The VALE Aircraft Hangar 000041



The VALE Aircraft Hangar 000091



The VALE Aircraft Hangar 000111



The VALE Aircraft Hangar 000141



The VALE Aircraft Hangar 000221

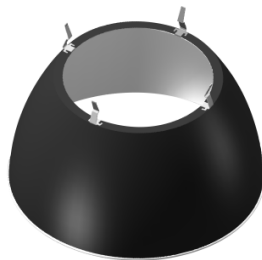


The VALE Aircraft Hangar 000231

## Products Used



**VENUS 200W**  
Industrial Highbay



**Aluminium Reflector**  
to suit 120W-200W VENUS Highbay



**LAWSON MK-II 150W**  
Canopy Light



**LENNOX 200W**  
Asymmetric Floodlight