

**Classic Series**

Proven. Quality. Customisable

# LAWSON MK-II 180W

## Surface Mount Canopy Light

Featuring an upgraded architectural design, the LAWSON MK-II 180W Canopy Light is perfect for commercial and industrial applications such as fuel stations or carparks. Better thermal management, resulting in a longer lifetime. Featuring an IP65 and IK08 rating, they are durable and built to last. Suited for surface mounting.

Verified by Techlume Australia on 23/08/2023



### SPECIFICATIONS

#### Material Specifications

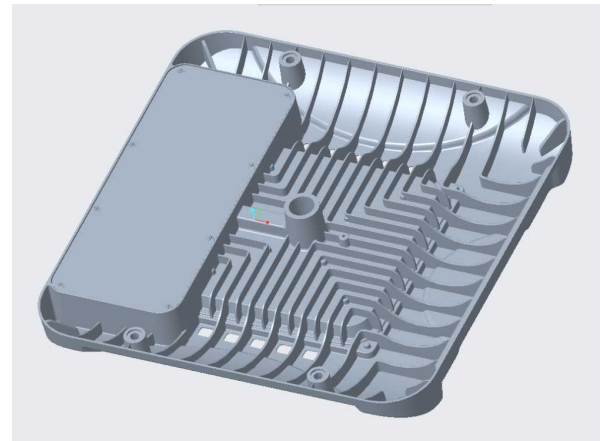
<b>Housing</b>	ADC12 Die Cast Aluminium
<b>Finish</b>	Anti-Corrosive Powder Coat
<b>Dimensions</b>	540mm x 540mm x 67mm(D)
<b>Impact Rating</b>	IK08
<b>Ingress Protection</b>	IP65
<b>Weight</b>	7.8kg
<b>Warranty</b>	5 Year Replacement

#### Electrical Specifications

<b>Power Supply</b>	Meanwell Driver, Non-Dim
<b>System Watts</b>	179W
<b>Operating Temperature (Ta)</b>	-25°C to + 50°C
<b>Connection Method</b>	Hard wired
<b>Input Voltage</b>	240V

#### Optic Specifications

<b>Light Source</b>	180W Lumileds LED
<b>Delivered Lumens</b>	32,494lm
<b>Efficacy</b>	181.5 lm/W
<b>CRI</b>	Ra 71
<b>Beam Angle</b>	120°
<b>Reported L70 (Hours)</b>	> 54,000 Hrs



### VARIATIONS

<b>LC2857</b>	LAWSON MK-II 180W Canopy Light, White, 120°, Non-Dim, 4000K, 32,494lm
<b>LC2857D</b>	LAWSON MK-II 180W Canopy Light, White, 120°, DALI, 4000K, 32,494lm