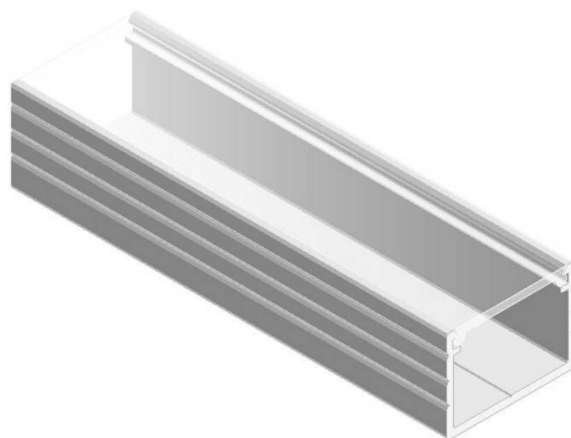


LYNE 1813 Surface Aluminium Profile

Classic Series

Proven. Quality. Customisable

The LYNE 1813 SURFACE Profile is a surface mounted extrusion with sufficient depth to reduce light hot spotting. Available in 2m lengths, but can be cut to length before supply. Channels on the sides of the profile allow you to clip the profile into metal clips. Plastic End Caps come in pairs. One having a hole for the wires to pass through.



SPECIFICATIONS

Material Specifications

Material	Anodised Aluminium
Ingress Protection	IP20
Application	Joinery, Feature Lighting, Task Lighting
Dimensions	18mm(W) x 13mm(D)
Accessories	End Caps & Mounting Clips
Warranty	5 Year Replacement
Optics	PMMA Plastic Diffuser
Mounting	Surface, or Recessed
Light Source	INFINTY 14W LED Strip recommended

VARIATIONS

LC9165	LYNE 1813 Surface Mount Profile with Diffuser, Aluminium
LC9165B	LYNE 1813 Surface Mount Profile with Diffuser, Black
LC9165W	LYNE 1813 Surface Mount Profile with Diffuser, White

