



TECHLUME

A U S T R A L I A

LM-79 Test Report

Testing Method:	IES Approved Method: Electrical and Photometric Measurements of Solid-State Lighting Products
Relevant Standards:	IES LM-79-08
Test Date and Time:	21/08/2024 8:47:10 AM
Test Location:	Techlume Australia - East Goderich Street Deloraine, TAS 7304
Operator:	Roy Simpson
Measurement Number:	VFR-240821-0411-MS
Measurement Method:	Far Field, Type C Horizontal
Measurement Distance:	454.2 cm

Equipment Used

System Name:	LabSpion Goniometer
Sensor Name / Model:	Viso LabSensor Model2 / Freedom VIS (Custom Viso)
Spectrometer Range:	360 nm – 830 nm
Calibration Date:	16/12/2023
Flicker Meter Type:	Viso Systems LabFlicker
Manufacturer:	Viso Systems, Denmark

Test Conditions

Ambient Temperature:	25 °C ± 1 °C
----------------------	--------------

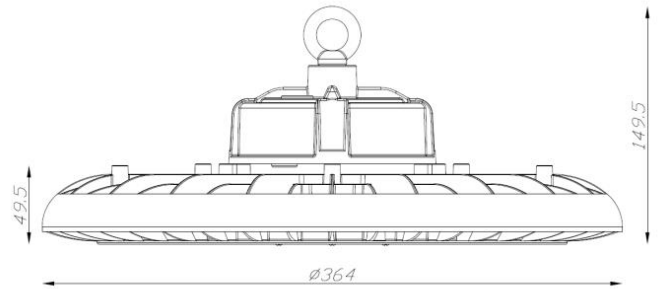
Remarks

The results stated in this report represent the tested sample only. All photometric and colourimetric data has been measured in compliance with IES LM-79-08 standards.



Product Overview

Product Description: FALCON Highbay - LC2577 - 200W - 3000K
 Item Number: LC2577
 Manufacturer: Decrolux Lighting Pty Ltd



Photometric Measurements

Total Luminous Flux	Luminous Efficacy	Luminous Intensity
30733 lm	157 Lumen/watt	11316 cd

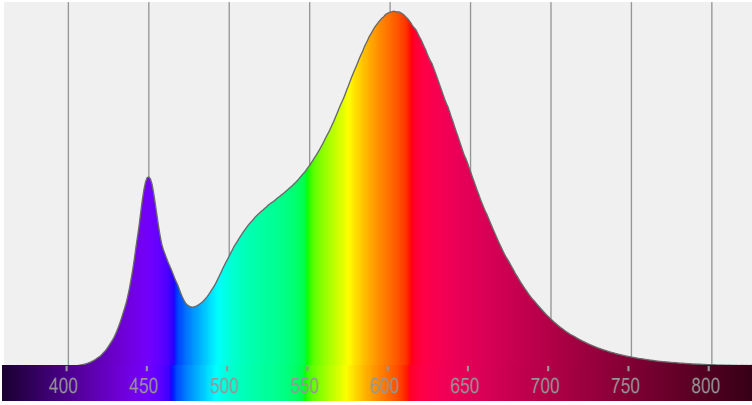
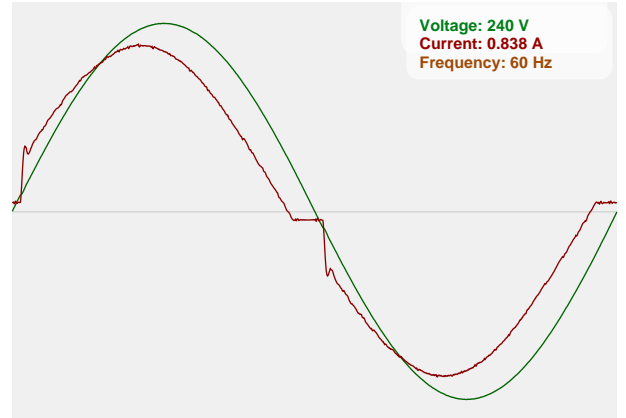
Correlated Colour Temperature, Target	Correlated Colour Temperature, Measured	Colour Rendering Index (CRI)
3000 K	2948 K	Ra 81.7

Electrical Measurements

Input Voltage	Input Current	Input Power	Input Voltage Frequency
240 VAC	0.838 A	195.2 W	60 Hz

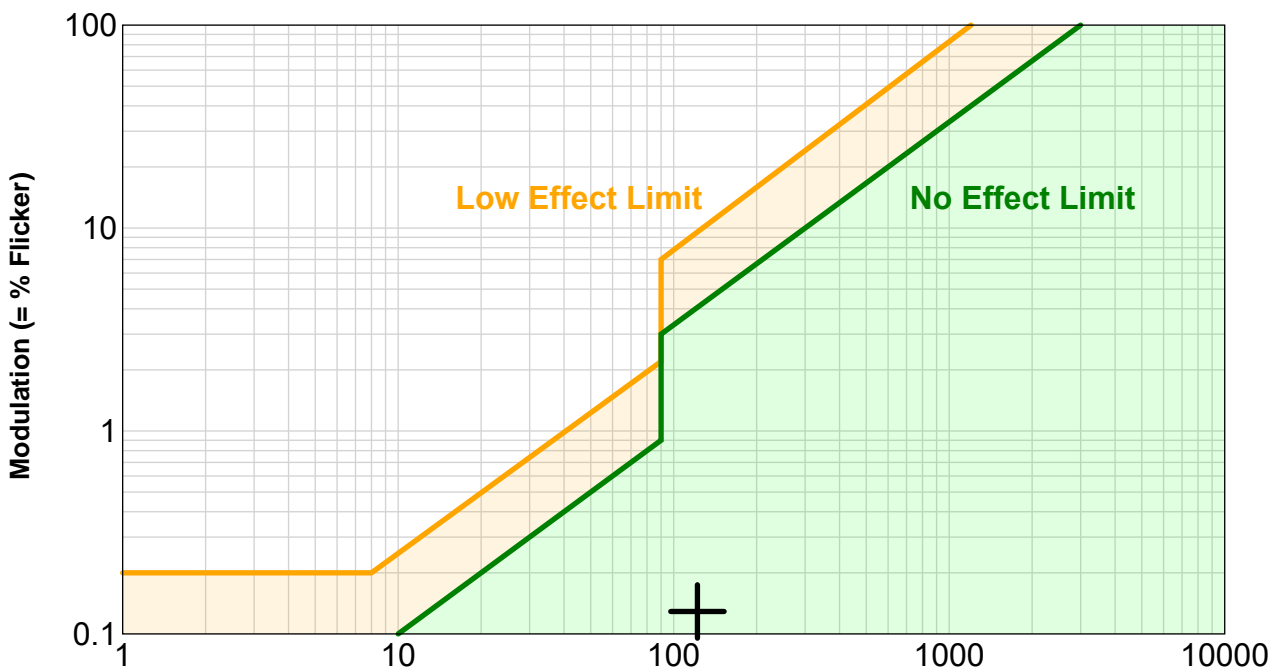
Power Factor	Stabilisation Time	Stabilisation Variation	Hours Operated Prior to Test
0.97	Lamp stabilized in 49 min 08 sec	-3.1%	0 hours

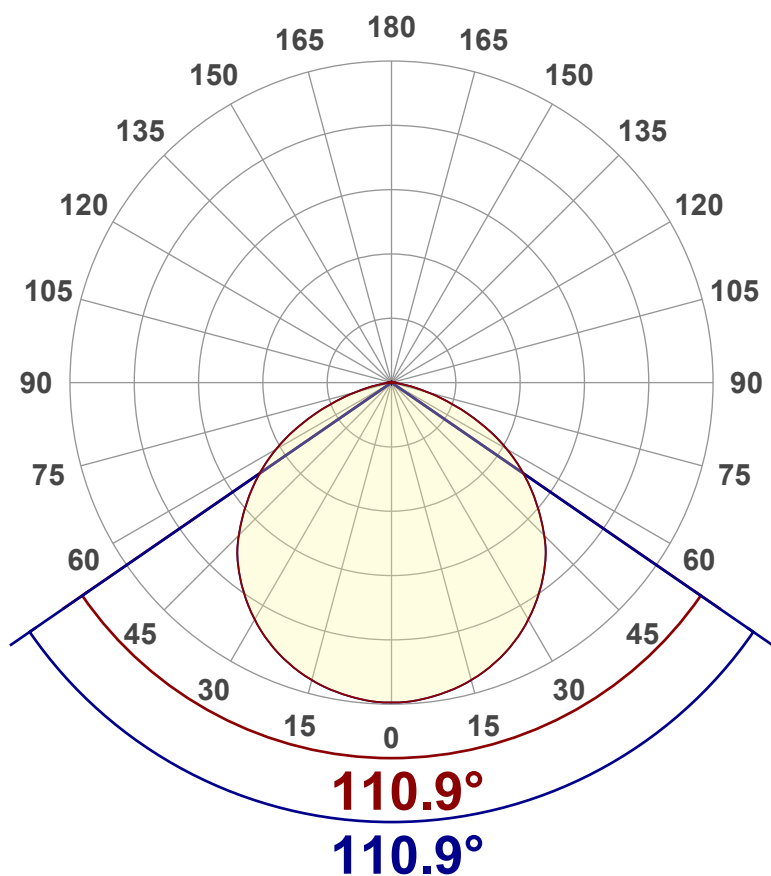


Spectral Power Distribution (SPD)

Input Power Curve

Flicker Details

Flicker Sample Rate	Flicker Percentage	Flicker Frequency	Flicker Index
20000 sample/s	0.13%	121.95 Hz	0

Flicker SVM Value	Flicker PstLM Value	Measurement Time (PstLM)	Measurement Time (all other indices)
0	0	180 s	1.2 s

IEEE 1789 Frequency/Modulation Plot


Angular Distribution – 0° / 90° Plane

Main Values

Total Lumen Output	30733 lm
Lumen Up%	0.19%
Lumen Down%	99.81%
Peak Intensity	11316 cd
Beam Angle (90%)	110.9°

Cut-off Angle

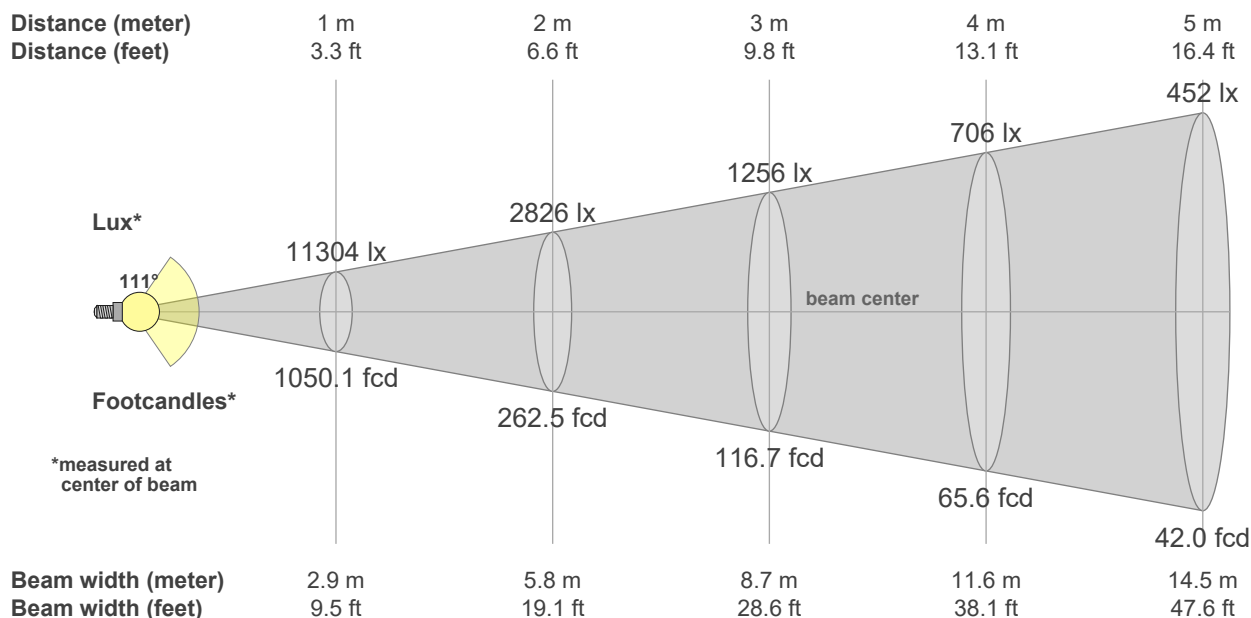
Average 2.5%	165.7°
---------------------	--------

Field Angle

Average 10%	152.8°
--------------------	--------

Intensity Ratio

In 120° Cone	83.0%
In 90° Cone	56.9%

C000-C180
C090-C270

Beam intensities from 1 – 20m

1	2	3	4	5	6	7	8	9	10	11	12	13	14	15	16	17	18	19	20	m
3.3	6.6	9.8	13.1	16.4	19.7	23	26.2	29.5	32.8	36.1	39.4	42.7	45.9	49.2	52.5	55.8	59.1	62.3	65.6	ft
11304	2826	1256	706	452	314	231	177	140	113	93	78	67	58	50	44	39	35	31	28	lux
1050.1	262.	116.	65.6	42	29.2	21.4	16.4	13	10.5	8.7	7.3	6.2	5.4	4.7	4.1	3.6	3.2	2.9	2.6	fc

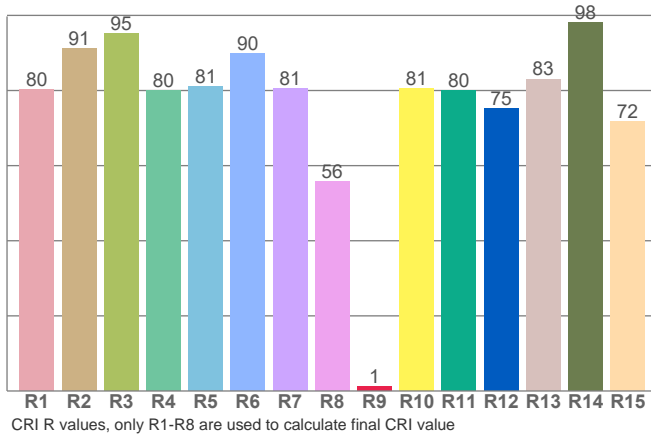


Colour Details

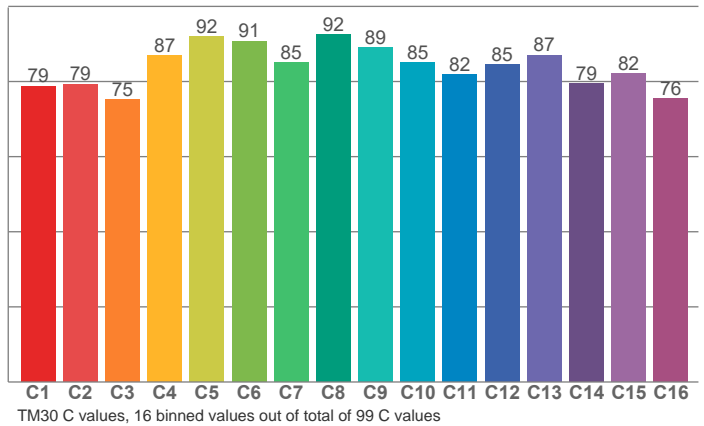
Colour Rendering Index (CRI)	Colour Rendering Index R9 Value	Colour Rendering TM30-18
Ra 81.7	R9 = 1.2	R _f 83.9, R _g 96.8

Colour Quality Scale	Correlated Colour Temperature, Target	Correlated Colour Temperature, Measured
CQS = 80.6	CCT = 3000 K	CCT = 2948 K

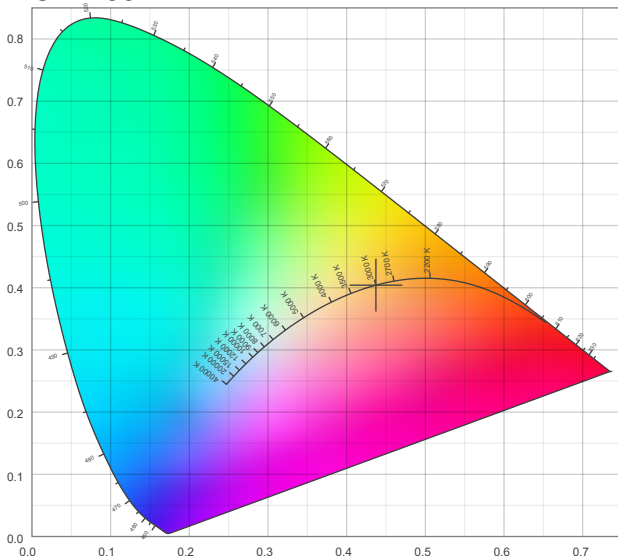
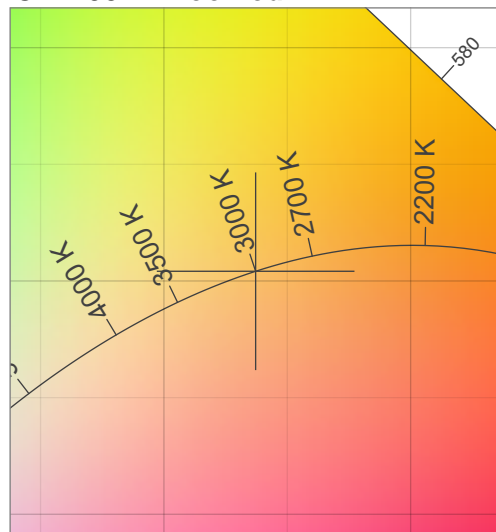
MacAdam Steps	Colour Coordinates CIE 1931	Colour Deviation from BBL
SDCM = 2.5	(x;y) = (0.437;0.404)	Duv = -0.0022

Colour Rendering Index per reference colour (CIE 1995)


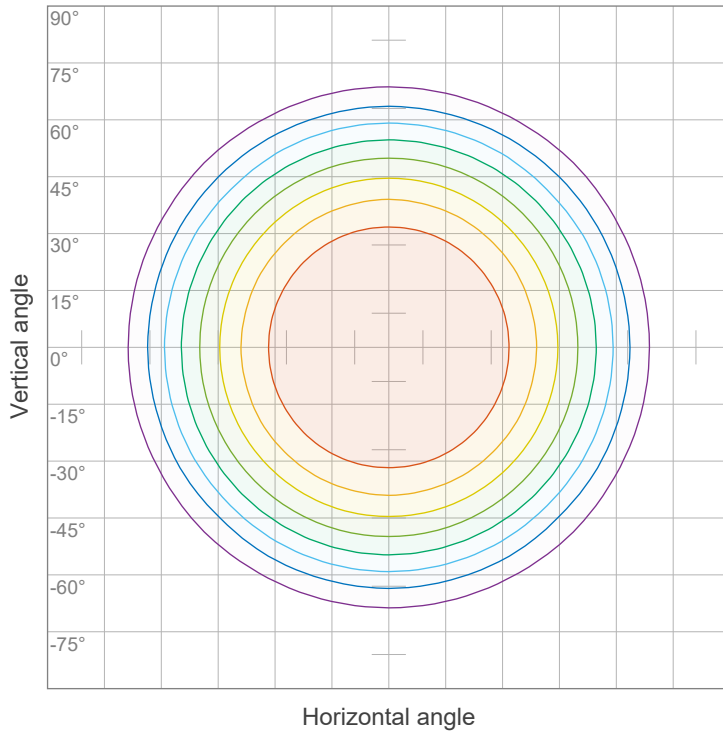
R1	R2	R3	R4	R5	R6	R7	R8	R9	R10	R11	R12	R13	R14	R15
80.3	91.2	95.1	79.9	81.0	89.9	80.5	55.7	1.2	80.6	80.0	75.2	83.0	98.0	71.7

TM30-18 Rf-values per hue bin


C1	C2	C3	C4	C5	C6	C7	C8	C9	C10	C11	C12	C13	C14	C15	C16
78.8	79.3	75.2	86.8	91.9	90.8	85.0	92.4	89.1	84.9	81.9	84.6	87.0	79.4	82.1	75.5

CIE 1931

CIE 1931 – Zoomed


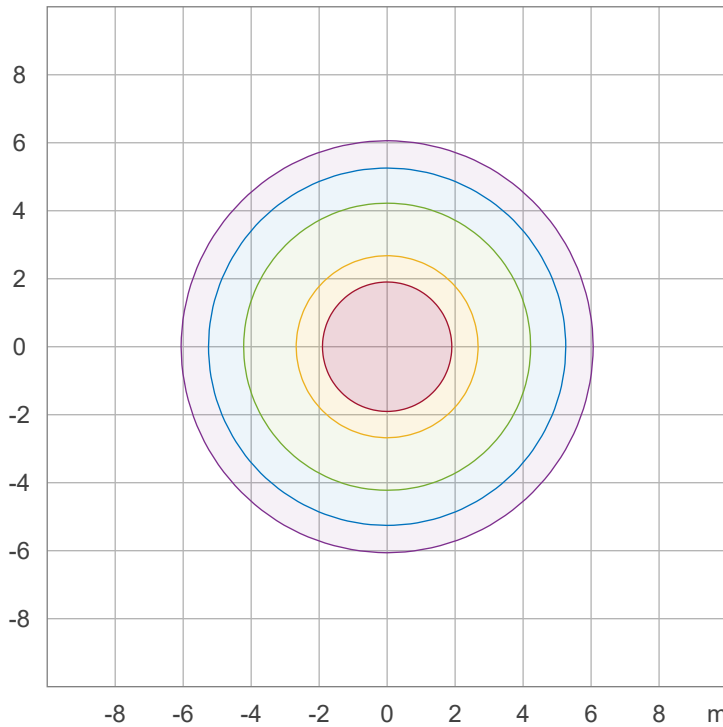
Iso-intensity Diagram (Iso-Candela)



90 %	10173.2 cd
80 %	9042.8 cd
70 %	7912.5 cd
60 %	6782.1 cd
50 %	5651.8 cd
40 %	4521.4 cd
30 %	3391.1 cd
20 %	2260.7 cd
10 %	1130.4 cd

Peak intensity: 11303.5 cd
 Number of c-planes: 24

Iso-illuminance Diagram (Iso-lux)



50.0 %	628.0 lx
30.0 %	376.8 lx
10.0 %	125.6 lx
5.0 %	62.8 lx
3.0 %	37.7 lx

Peak illuminance: 1255.9 lx
 Mounting height: 3.0 m
 Number of c-planes: 24



Light Planning – UGR table

Uncorrected, comprehensive UGR table according to 117-1995

Reflectances		70	70	50	50	30	70	70	50	50	30
ρ Ceiling		70	70	50	50	30	70	70	50	50	30
ρ Walls		50	30	50	30	30	50	30	50	30	30
ρ Floor		20	20	20	20	20	20	20	20	20	20
Room size		Viewed Crosswise					Viewed Endwise				
H = mounting height above eye level		(Viewing direction orthogonal to lamp length axis)					(Viewing direction parallel to lamp length axis)				
X	Y										
2H	2H	30.2	31.3	30.4	31.7	31.9	30.2	31.3	30.4	31.6	31.9
	3H	31.0	32.3	31.5	32.5	32.7	31.0	32.3	31.5	32.5	32.7
	4H	31.3	32.4	31.7	32.7	33.0	31.3	32.4	31.7	32.7	33.0
	6H	31.4	32.4	31.7	32.7	33.1	31.4	32.4	31.7	32.7	33.1
	8H	31.4	32.4	31.7	32.7	33.1	31.4	32.4	31.7	32.7	33.1
	12H	31.3	32.3	31.7	32.6	33.1	31.3	32.3	31.7	32.6	33.1
4H	2H	30.6	31.8	31.0	32.0	32.3	30.6	31.8	31.0	32.0	32.3
	3H	31.7	32.7	32.1	33.0	33.5	31.7	32.7	32.1	33.0	33.5
	4H	32.0	32.8	32.4	33.2	33.8	32.0	32.8	32.4	33.3	33.8
	6H	32.1	32.9	32.6	33.3	33.6	32.1	32.9	32.6	33.3	33.6
	8H	32.1	32.8	32.6	33.2	33.6	32.1	32.8	32.6	33.2	33.6
	12H	32.0	32.7	32.5	33.1	33.6	32.0	32.7	32.5	33.1	33.6
8H	4H	32.0	32.8	32.5	33.2	33.5	32.0	32.8	32.6	33.2	33.6
	6H	32.2	32.8	32.7	33.2	33.8	32.2	32.8	32.7	33.2	33.8
	8H	32.2	32.7	32.7	33.2	33.9	32.2	32.7	32.8	33.3	33.9
	12H	32.2	32.6	32.8	33.1	33.7	32.2	32.6	32.8	33.1	33.8
12H	4H	32.0	32.6	32.5	33.1	33.5	32.0	32.6	32.5	33.1	33.5
	6H	32.2	32.7	32.7	33.2	33.9	32.2	32.7	32.7	33.2	33.9
	8H	32.2	32.6	32.8	33.1	33.7	32.2	32.6	32.8	33.1	33.8
Variations with the observer position for the luminaire spacings, S:											
S = 1.0H		0.2 / -0.2					0.2 / -0.2				
S = 1.5H		0.4 / -0.6					0.4 / -0.6				
S = 2.0H		1.0 / -1.5					1.0 / -1.5				

NOTE: An asymmetry correction has been applied to the beam distribution of this measurement in order to accurately calculate UGR.

Coefficients of Utilization

Ceiling reflectance	80			70			50			30			10			0		
Wall reflectance	70	50	30	10	70	50	30	10	50	30	10	50	30	10	50	30	10	0
Floor reflectance	20	20	20	20	20	20	20	20	20	20	20	20	20	20	20	20	20	0
RCR		(RCR: Room Cavity Ratio)						Room Values are expressed as percentage of Lumen delivered to the task surface										
0	119	119	119	119	116	116	116	116	111	111	111	106	106	106	102	102	102	100
1	110	105	101	98	107	103	99	96	99	96	93	95	92	90	91	89	87	85
2	100	92	86	80	97	90	84	79	87	82	78	84	79	76	81	77	74	72
3	91	81	73	67	89	80	72	67	77	71	65	74	69	64	71	67	63	61
4	84	72	64	57	82	71	63	57	68	61	56	66	60	55	64	59	54	52
5	77	65	56	49	75	63	55	49	61	54	48	59	53	48	57	52	47	45
6	71	58	49	43	69	57	49	43	55	48	42	54	47	42	52	46	42	40
7	66	53	44	38	64	52	44	38	50	43	38	49	42	37	47	42	37	35
8	61	48	40	34	60	47	39	34	46	39	34	45	38	33	44	38	33	31
9	57	44	36	30	56	43	36	30	42	35	30	41	35	30	40	34	30	28
10	54	41	33	28	52	40	33	28	39	32	27	38	32	27	37	31	27	25

