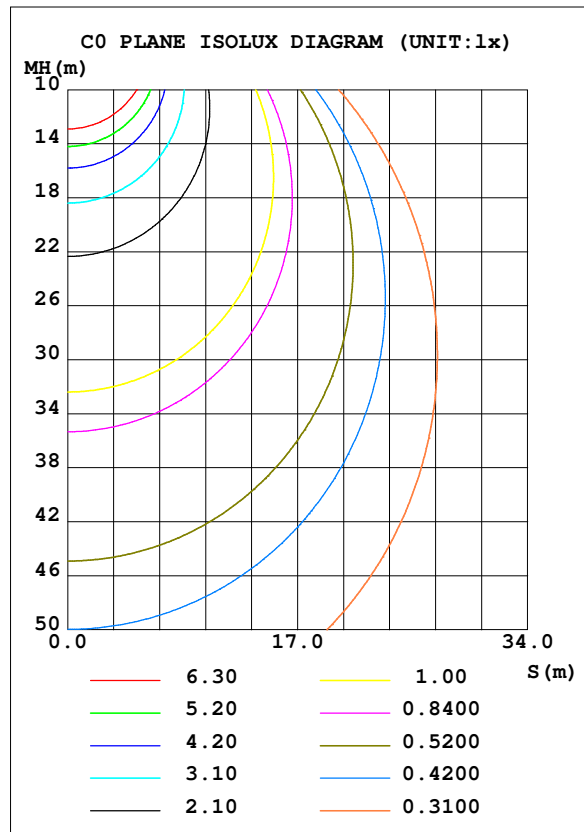
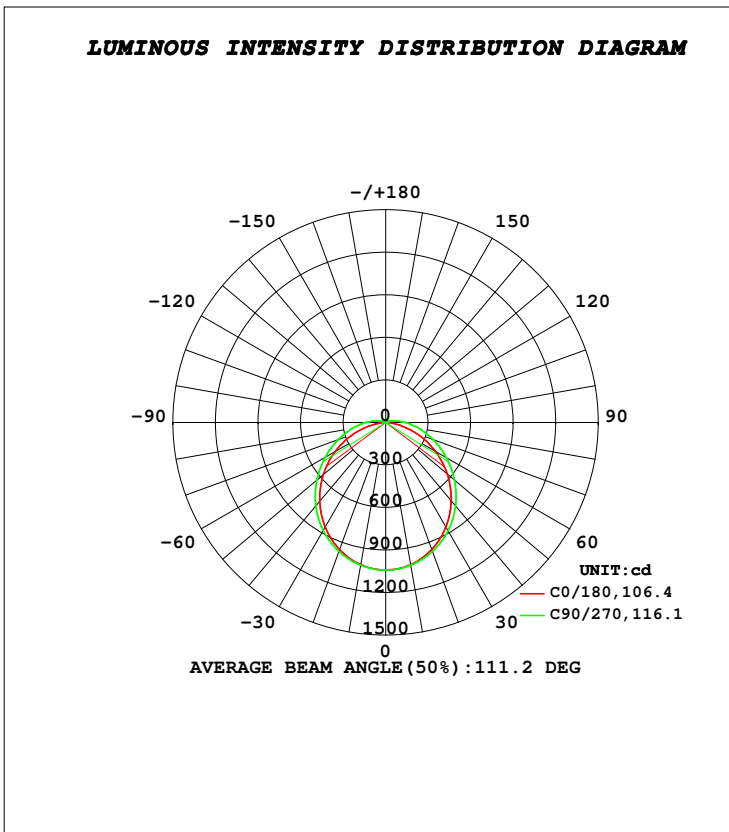


LUMINAIRE PHOTOMETRIC TEST REPORT

Test:U:239.8V I:0.2069A P:38.73W PF:0.7806 Lamp Flux:3150.9x1 lm		
NAME: CADE Batten 40w	TYPE:LED Batten	WEIGHT:0.9
SPEC.:	DIM.: 1190 x 80 x 35	SERIAL No.:1
MFR.: Decrolux	SUR.:	Shielding Angle:

DATA OF LAMP		PHOTOMETRIC DATA Eff: 81.35 lm/W			
MODEL		I _{max} (cd)	1041	S/MH (C0/180)	1.23
NOMINAL POWER (W)		LOR (%)	100.0	S/MH (C90/270)	1.26
RATED VOLTAGE (V)	240.0	TOTAL FLUX (lm)	3150.9	η UP, DN (C0-180)	1.6, 48.4
NOMINAL FLUX (lm)	3150.9	CIE CLASS	DIRECT	η UP, DN (C180-360)	1.6, 48.4
LAMPS INSIDE	1	η up (%)	3.1	CIBSE SHR NOM	1.25
TEST VOLTAGE (V)	240	η down (%)	96.9	CIBSE SHR MAX	1.35



C Range: 0 - 360DEG
C Interval: 22.5DEG
Test Speed: HIGH
Temperature: 20.4DEG
Operators: JK
Test Date: 08 November 2016

γ Range: 0 - 180DEG
γ Interval: 0.5DEG
Test System: EVERFINE GO-2000B_V1 SYSTEM V2.0.351
Humidity: 49%
Test Distance: 8.300m [K=1.0000]
Remarks:

ZONAL FLUX DIAGRAM

ZONAL FLUX DIAGRAM:

γ	C0	C45	C90	C135	C180	C225	C270	C315	γ	φ zone	φ total	%lum, lamp
5	1035	1036	1036	1036	1035	1036	1036	1036	0- 5	24.83	24.83	0.79,0.79
10	1018	1020	1022	1021	1018	1021	1022	1020	5- 10	73.58	98.41	3.12,3.12
15	990.8	995.3	999.1	996.2	991.0	996.2	999.1	995.3	10- 15	119.6	218.0	6.92,6.92
20	953.0	961.3	967.6	962.0	954.0	962.0	967.6	961.3	15- 20	161.3	379.4	12.12
25	906.0	918.4	928.1	919.1	907.6	919.1	928.1	918.4	20- 25	197.2	576.5	18.3,18.3
30	850.8	867.9	881.0	868.3	853.3	868.3	881.0	867.9	25- 30	225.9	802.5	25.5,25.5
35	788.0	809.9	827.0	810.7	791.9	810.7	827.0	809.9	30- 35	246.8	1049	33.3,33.3
40	719.1	745.9	767.2	747.4	724.3	747.4	767.2	745.9	35- 40	259.2	1309	41.5,41.5
45	645.4	677.5	702.3	679.0	651.9	679.0	702.3	677.5	40- 45	263.1	1572	49.9,49.9
50	567.6	605.3	633.7	606.6	575.2	606.6	633.7	605.3	45- 50	258.5	1830	58.1,58.1
55	486.9	529.7	563.4	531.6	495.5	531.6	563.4	529.7	50- 55	245.9	2076	65.9,65.9
60	404.0	452.4	493.1	455.6	413.0	455.6	493.1	452.4	55- 60	226.3	2302	73.1,73.1
65	319.4	377.1	423.8	380.6	328.5	380.6	423.8	377.1	60- 65	200.9	2503	79.4,79.4
70	234.7	306.1	356.9	308.5	243.2	308.5	356.9	306.1	65- 70	171.1	2674	84.9,84.9
75	152.6	240.5	294.4	241.5	159.6	241.5	294.4	240.5	70- 75	139.0	2813	89.3,89.3
80	78.11	180.5	236.9	180.9	82.81	180.9	236.9	180.5	75- 80	107.3	2921	92.7,92.7
85	21.18	129.6	184.9	129.3	23.24	129.3	184.9	129.6	80- 85	78.12	2999	95.2,95.2
90	1.532	86.95	139.8	86.51	1.469	86.51	139.8	86.95	85- 90	53.73	3053	96.9,96.9
95	1.629	54.05	101.9	53.42	1.541	53.42	101.9	54.05	90- 95	35.75	3088	98,98
100	1.904	25.08	67.10	24.31	1.878	24.31	67.10	25.08	95-100	21.55	3110	98.7,98.7
105	2.309	12.24	42.19	12.01	2.289	12.01	42.19	12.24	100-105	12.20	3122	99.1,99.1
110	2.752	4.448	23.13	4.415	2.730	4.415	23.13	4.448	105-110	6.775	3129	99.3,99.3
115	3.179	3.388	10.04	3.578	3.175	3.578	10.04	3.388	110-115	3.445	3132	99.4,99.4
120	3.622	3.654	3.995	3.919	3.599	3.919	3.995	3.654	115-120	1.974	3134	99.5,99.5
125	4.006	4.049	4.279	4.116	4.022	4.116	4.279	4.049	120-125	1.831	3136	99.5,99.5
130	4.445	4.447	4.610	4.513	4.442	4.513	4.610	4.447	125-130	1.883	3138	99.6,99.6
135	4.855	4.846	4.976	4.923	4.866	4.923	4.976	4.846	130-135	1.910	3140	99.6,99.6
140	5.248	5.236	5.315	5.320	5.276	5.320	5.315	5.236	135-140	1.896	3142	99.7,99.7
145	5.628	5.592	5.651	5.717	5.636	5.717	5.651	5.592	140-145	1.833	3144	99.8,99.8
150	5.987	5.936	5.996	6.076	5.987	6.076	5.996	5.936	145-150	1.721	3145	99.8,99.8
155	6.329	6.271	6.336	6.464	6.333	6.464	6.336	6.271	150-155	1.566	3147	99.9,99.9
160	6.667	6.585	6.659	6.738	6.659	6.738	6.659	6.585	155-160	1.368	3148	99.9,99.9
165	6.958	6.869	6.985	6.947	6.959	6.947	6.985	6.869	160-165	1.125	3149	100,100
170	7.165	7.115	7.262	7.148	7.173	7.148	7.262	7.115	165-170	0.8400	3150	100,100
175	7.360	7.344	7.479	7.315	7.353	7.315	7.479	7.344	170-175	0.5218	3151	100,100
180	7.487	7.472	7.675	7.400	7.464	7.400	7.675	7.472	175-180	0.1780	3151	100,100
DEG	LUMINOUS INTENSITY:cd								UNIT:lm			

Conical surface Flux(90deg): 1571.6 lm

%lum = 49.9%
%lamp = 49.9%

Conical surface Flux(120deg): 2302.3 lm

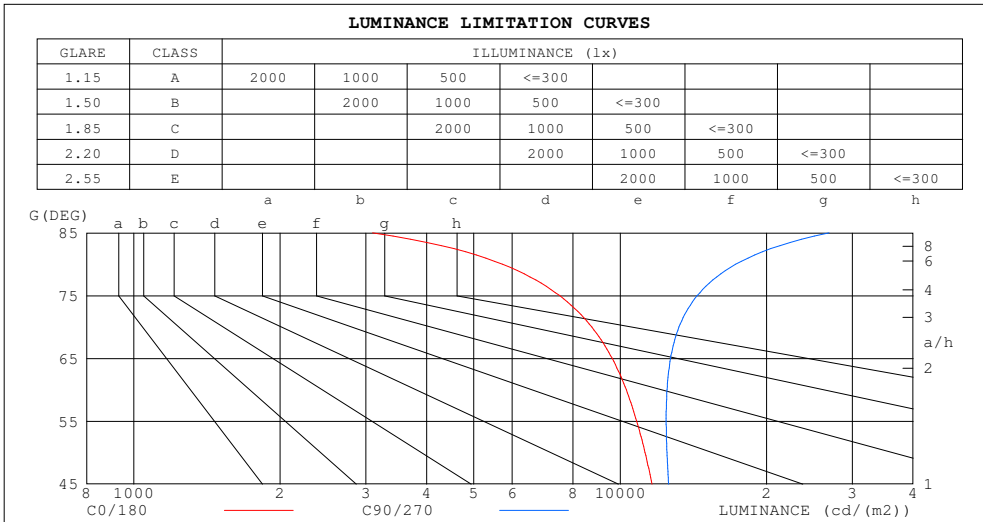
%lum = 73.1%
%lamp = 73.1%

C Range: 0 - 360DEG
C Interval: 22.5DEG
Test Speed: HIGH
Temperature:20.4DEG
Operators:JK
Test Date:08 November 2016

γ Range: 0 - 180DEG
γ Interval: 0.5DEG
Test System:EVERFINE GO-2000B_V1 SYSTEM V2.0.351
Humidity:49%
Test Distance:8.300m [K=1.0000]
Remarks:

LUMINANCE LIMITATION CURVES

Test:U:239.8V I:0.2069A P:38.73W PF:0.7806 Lamp Flux:3150.9x1 lm		
NAME: CADE Batten 40w	TYPE:LED Batten	WEIGHT:0.9
SPEC.:	DIM.: 1190 x 80 x 35	SERIAL No.:1
MFR.: Decrolux	SUR.:	Shielding Angle:



LUMINANCE cd/(m2)		
G (DEG)	C0/180	C90/270
85	3097	26861
80	5731	17274
75	7510	14401
70	8742	13210
65	9628	12694
60	10294	12486
55	10816	12434
50	11251	12480
45	11628	12574

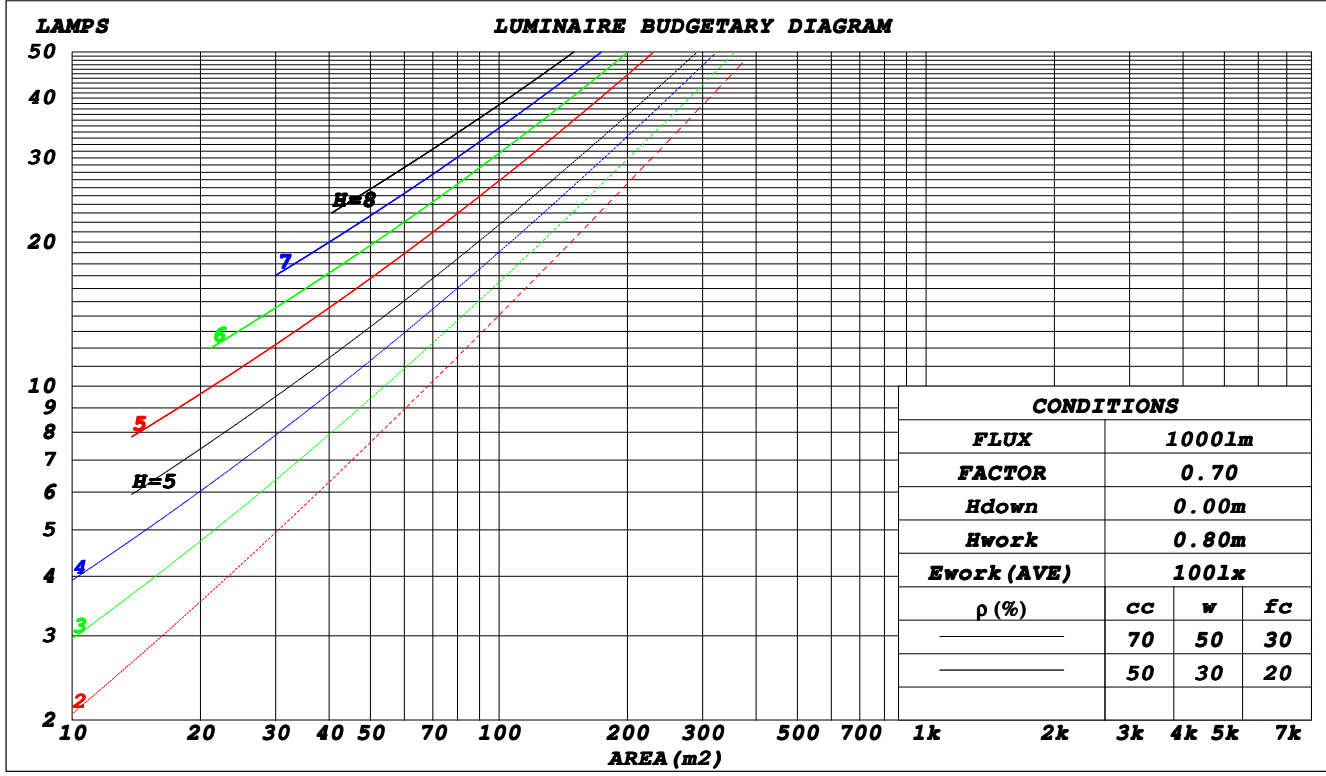
C Range: 0 - 360DEG
C Interval: 22.5DEG
Test Speed: HIGH
Temperature: 20.4DEG
Operators: JK
Test Date: 08 November 2016

γ Range: 0 - 180DEG
γ Interval: 0.5DEG
Test System: EVERFINE GO-2000B_V1 SYSTEM V2.0.351
Humidity: 49%
Test Distance: 8.300m [K=1.0000]
Remarks:

CU AND LUMINAIRE BUDGETARY ESTIMATE DIAGRAM

Test:U:239.8V I:0.2069A P:38.73W PF:0.7806 Lamp Flux:3150.9x1 lm		
NAME: CADE Batten 40w	TYPE:LED Batten	WEIGHT:0.9
SPEC.:	DIM.: 1190 x 80 x 35	SERIAL No.:1
MFR.: Decrolux	SUR.:	Shielding Angle:

ρ_{cc}	80%			70%			50%			30%			10%			0
ρ_w	50%	30%	10%	50%	30%	10%	50%	30%	10%	50%	30%	10%	50%	30%	10%	0
ρ_{fc}	20%			20%			20%			20%			20%			0
RCR	RCR:Room Cavity Ratio															
	Coefficients of Utilization(CU)															
0.0	1.18	1.18	1.18	1.15	1.15	1.15	1.09	1.09	1.09	1.04	1.04	1.04	.99	.99	.99	.97
1.0	1.02	.97	.93	.99	.95	.91	.94	.91	.88	.90	.87	.84	.86	.83	.81	.79
2.0	.88	.81	.75	.86	.79	.74	.82	.76	.72	.78	.74	.69	.75	.71	.67	.65
3.0	.77	.69	.62	.75	.68	.61	.72	.65	.60	.69	.63	.58	.66	.61	.57	.55
4.0	.68	.59	.52	.67	.58	.52	.64	.57	.51	.61	.55	.50	.59	.53	.49	.46
5.0	.61	.52	.45	.60	.51	.45	.57	.50	.44	.55	.48	.43	.53	.47	.42	.40
6.0	.55	.46	.39	.54	.45	.39	.52	.44	.38	.50	.43	.38	.48	.42	.37	.35
7.0	.50	.41	.35	.49	.40	.34	.47	.39	.34	.45	.38	.33	.44	.38	.33	.31
8.0	.45	.37	.31	.45	.36	.31	.43	.36	.30	.41	.35	.30	.40	.34	.30	.28
9.0	.42	.33	.28	.41	.33	.28	.40	.32	.27	.38	.32	.27	.37	.31	.27	.25
10.0	.38	.30	.25	.38	.30	.25	.37	.30	.25	.35	.29	.24	.34	.28	.24	.22



C Range: 0 - 360DEG
 C Interval: 22.5DEG
 Test Speed: HIGH
 Temperature: 20.4DEG
 Operators: JK
 Test Date: 08 November 2016

γ Range: 0 - 180DEG
 γ Interval: 0.5DEG
 Test System: EVERFINE GO-2000B_V1 SYSTEM V2.0.351
 Humidity: 49%
 Test Distance: 8.300m [K=1.0000]
 Remarks:

WEC AND CCEC

Test:U:239.8V I:0.2069A P:38.73W PF:0.7806 Lamp Flux:3150.9x1 lm		
NAME: CADE Batten 40w	TYPE:LED Batten	WEIGHT:0.9
SPEC.:	DIM.: 1190 x 80 x 35	SERIAL No.:1
MFR.: Decrolux	SUR.:	Shielding Angle:

ρ_{cc}	80%			70%			50%			30%			10%			0
ρ_w	50%	30%	10%	50%	30%	10%	50%	30%	10%	50%	30%	10%	50%	30%	10%	0
ρ_{fc}	20%			20%			20%			20%			20%			0
RCR	RCR:Room Cavity Ratio						Wall Exitance Coefficients (WEC)									
0.0																
1.0	.337	.192	.061	.329	.188	.060	.314	.180	.057	.300	.173	.055	.287	.166	.054	
2.0	.306	.168	.051	.299	.165	.051	.285	.159	.049	.273	.153	.048	.261	.148	.047	
3.0	.279	.148	.044	.272	.146	.044	.260	.141	.043	.249	.137	.042	.239	.132	.041	
4.0	.255	.132	.039	.249	.130	.039	.238	.126	.038	.228	.123	.037	.219	.119	.036	
5.0	.234	.119	.035	.229	.118	.034	.220	.114	.034	.211	.111	.033	.202	.108	.032	
6.0	.216	.108	.031	.212	.107	.031	.203	.104	.030	.195	.101	.030	.188	.099	.029	
7.0	.201	.099	.028	.197	.098	.028	.189	.096	.028	.182	.093	.027	.175	.091	.027	
8.0	.187	.091	.026	.183	.090	.026	.176	.088	.025	.170	.086	.025	.164	.084	.024	
9.0	.175	.085	.024	.172	.084	.023	.165	.082	.023	.159	.080	.023	.154	.078	.023	
10.0	.164	.079	.022	.161	.078	.022	.156	.076	.021	.150	.075	.021	.145	.073	.021	

ρ_{cc}	80%			70%			50%			30%			10%			0
ρ_w	50%	30%	10%	50%	30%	10%	50%	30%	10%	50%	30%	10%	50%	30%	10%	0
ρ_{fc}	20%			20%			20%			20%			20%			0
RCR	RCR:Room Cavity Ratio						Ceiling Cavity Exitance Coefficients (CCEC)									
0.0	.214	.214	.214	.183	.183	.183	.125	.125	.125	.072	.072	.072	.023	.023	.023	
1.0	.206	.180	.156	.176	.154	.134	.121	.106	.093	.069	.061	.054	.022	.020	.017	
2.0	.198	.156	.120	.170	.134	.104	.116	.093	.073	.067	.054	.043	.022	.017	.014	
3.0	.190	.139	.097	.163	.120	.084	.112	.083	.059	.065	.049	.035	.021	.016	.011	
4.0	.183	.125	.082	.157	.108	.071	.108	.076	.050	.062	.044	.030	.020	.014	.010	
5.0	.175	.115	.071	.150	.100	.062	.104	.070	.044	.060	.041	.026	.019	.013	.009	
6.0	.168	.107	.063	.144	.093	.055	.099	.065	.039	.058	.038	.023	.019	.012	.008	
7.0	.161	.100	.058	.138	.087	.050	.096	.061	.036	.055	.036	.021	.018	.012	.007	
8.0	.154	.094	.053	.133	.082	.046	.092	.057	.033	.053	.034	.020	.017	.011	.006	
9.0	.148	.089	.050	.127	.078	.043	.088	.055	.031	.051	.032	.018	.017	.011	.006	
10.0	.142	.085	.047	.123	.074	.041	.085	.052	.029	.050	.031	.017	.016	.010	.006	

C Range: 0 - 360DEG
C Interval: 22.5DEG
Test Speed: HIGH
Temperature: 20.4DEG
Operators: JK
Test Date: 08 November 2016

γ Range: 0 - 180DEG
 γ Interval: 0.5DEG
Test System: EVERFINE GO-2000B_V1 SYSTEM V2.0.351
Humidity: 49%
Test Distance: 8.300m [K=1.0000]
Remarks:

UGR(Unified Glare Rating) Table

Test:U:239.8V I:0.2069A P:38.73W PF:0.7806 Lamp Flux:3150.9x1 lm										
NAME: CADE Batten 40w					TYPE:LED Batten			WEIGHT:0.9		
SPEC.:					DIM.: 1190 x 80 x 35			SERIAL No.:1		
MFR.: Decrolux					SUR.:			Shielding Angle:		
ceiling/cavity	0.7	0.7	0.5	0.5	0.3	0.7	0.7	0.5	0.5	0.3
walls	0.5	0.3	0.5	0.3	0.3	0.5	0.3	0.5	0.3	0.3
working plane	0.2	0.2	0.2	0.2	0.2	0.2	0.2	0.2	0.2	0.2
Room dimensions	Viewed crosswise					Viewed endwise				
x = 2H y = 2H	20.6	22.1	20.9	22.4	22.6	21.5	23.0	21.8	23.3	23.5
3H	21.9	23.3	22.2	23.6	23.9	23.4	24.8	23.8	25.1	25.4
4H	22.4	23.7	22.7	24.0	24.3	24.4	25.7	24.8	26.0	26.4
6H	22.7	23.9	23.0	24.2	24.6	25.4	26.6	25.8	27.0	27.3
8H	22.7	23.9	23.1	24.3	24.6	25.9	27.1	26.3	27.5	27.8
12H	22.7	23.9	23.1	24.2	24.6	26.5	27.7	26.9	28.0	28.4
4H 2H	21.3	22.7	21.7	23.0	23.3	22.1	23.4	22.4	23.7	24.0
3H	22.8	24.0	23.2	24.4	24.7	24.2	25.4	24.6	25.7	26.1
4H	23.4	24.5	23.8	24.9	25.3	25.3	26.4	25.8	26.8	27.2
6H	23.8	24.8	24.3	25.2	25.6	26.5	27.5	27.0	27.9	28.3
8H	24.0	24.9	24.4	25.3	25.7	27.2	28.1	27.6	28.5	29.0
12H	24.0	24.8	24.5	25.3	25.8	27.9	28.7	28.4	29.2	29.6
8H 4H	24.0	24.9	24.4	25.3	25.7	25.6	26.5	26.1	26.9	27.4
6H	24.6	25.4	25.1	25.8	26.3	27.1	27.8	27.6	28.3	28.8
8H	24.9	25.5	25.4	26.0	26.5	27.9	28.6	28.4	29.1	29.6
12H	25.0	25.6	25.6	26.1	26.7	28.8	29.4	29.4	29.9	30.5
12H 4H	24.1	24.9	24.6	25.4	25.9	25.6	26.5	26.1	26.9	27.4
6H	24.9	25.6	25.4	26.0	26.6	27.2	27.8	27.7	28.3	28.8
8H	25.2	25.8	25.8	26.3	26.9	28.1	28.7	28.6	29.2	29.7
Variations with the observer position at spacings:										
S = 1.0H	+ 0.1 / - 0.2					+ 0.1 / - 0.1				
1.5H	+ 0.2 / - 0.3					+ 0.2 / - 0.3				
2.0H	+ 0.2 / - 0.2					+ 0.2 / - 0.3				

 CIE Pub.117 Corrected 3151 lm Total Lamp Luminous Flux. ($8\log(F/F_0) = 4.0$)

C Range: 0 - 360DEG
C Interval: 22.5DEG
Test Speed: HIGH
Temperature:20.4DEG
Operators:JK
Test Date:08 November 2016
 γ Range: 0 - 180DEG
 γ Interval: 0.5DEG
Test System:EVERFINE GO-2000B_V1 SYSTEM V2.0.351
Humidity:49%
Test Distance:8.300m [K=1.0000]
Remarks:

UTILIZATION FACTORS TABLE

Test:U:239.8V I:0.2069A P:38.73W PF:0.7806 Lamp Flux:3150.9x1 lm		
NAME: CADE Batten 40w	TYPE:LED Batten	WEIGHT:0.9
SPEC.:	DIM.: 1190 x 80 x 35	SERIAL No.:1
MFR.: Decrolux	SUR.:	Shielding Angle:

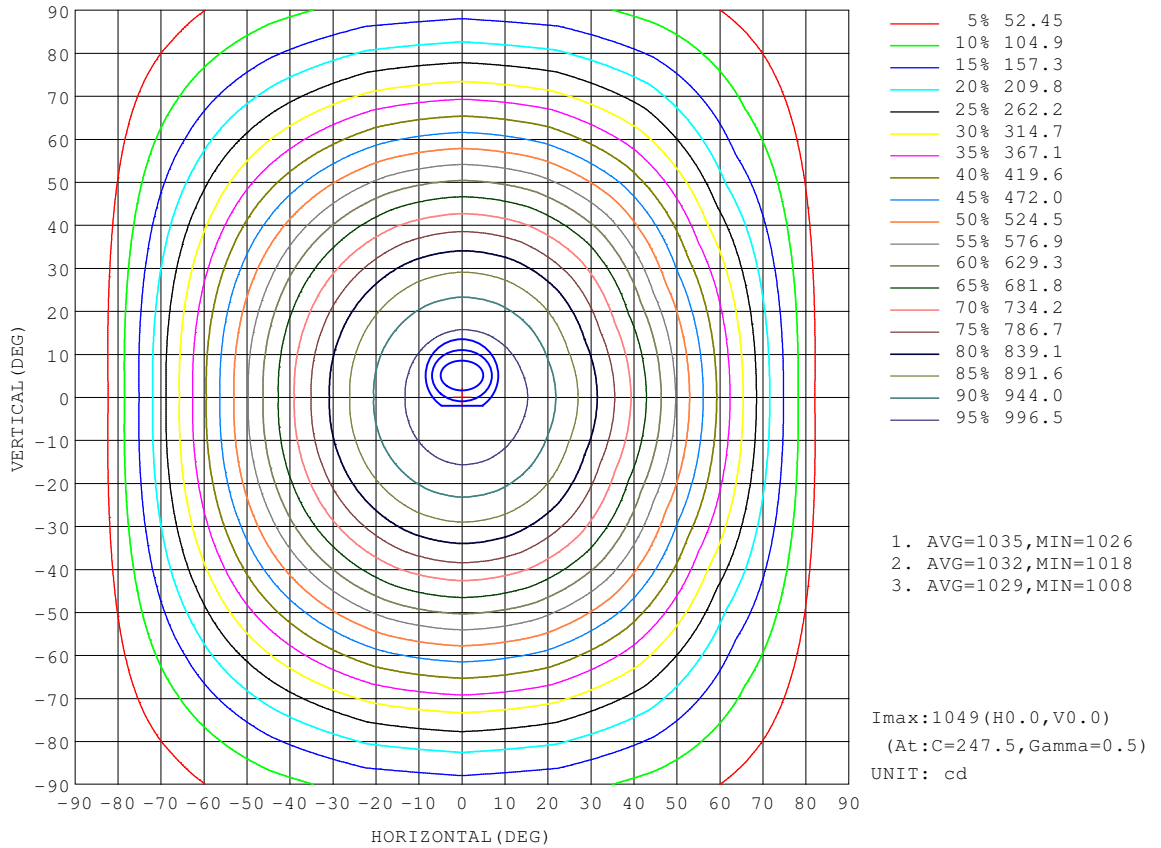
REFLECTANCE										
Ceiling	0.8	0.8	0.8	0.7	0.7	0.7	0.5	0.5	0.5	0
Walls	0.7	0.5	0.3	0.7	0.5	0.3	0.7	0.5	0.3	0
Working plane	0.2	0.2	0.2	0.2	0.2	0.2	0.2	0.2	0.2	0
ROOM INDEX	UTILIZATION FACTORS (PERCENT) $k(RI) \times RCR = 5$									
$k = 0.60$	56	44	37	55	44	37	54	43	37	30
0.80	65	53	46	64	53	46	62	52	45	38
1.00	74	62	54	72	61	54	70	63	54	46
1.25	81	69	62	79	69	62	76	67	61	53
1.50	85	75	68	84	74	67	80	72	66	58
2.00	92	83	76	90	82	75	86	79	74	65
2.50	96	88	81	94	86	80	90	83	78	69
3.00	100	92	86	97	90	85	93	87	82	73
4.00	104	98	92	101	96	91	97	92	88	78
5.00	107	101	96	104	99	95	99	95	91	81
ROOM INDEX	UF (total)									Direct
According to DIN EN 13032-2 2004			Suspended				SHRNOM = 1.25			

C Range: 0 - 360DEG
C Interval: 22.5DEG
Test Speed: HIGH
Temperature: 20.4DEG
Operators: JK
Test Date: 08 November 2016

γ Range: 0 - 180DEG
 γ Interval: 0.5DEG
Test System: EVERFINE GO-2000B_V1 SYSTEM V2.0.351
Humidity: 49%
Test Distance: 8.300m [K=1.0000]
Remarks:

ISOCANDELA DIAGRAM

Test:U:239.8V I:0.2069A P:38.73W PF:0.7806 Lamp Flux:3150.9x1 lm		
NAME: CADE Batten 40w	TYPE:LED Batten	WEIGHT:0.9
SPEC.:	DIM.: 1190 x 80 x 35	SERIAL No.:1
MFR.: Decrolux	SUR.:	Shielding Angle:



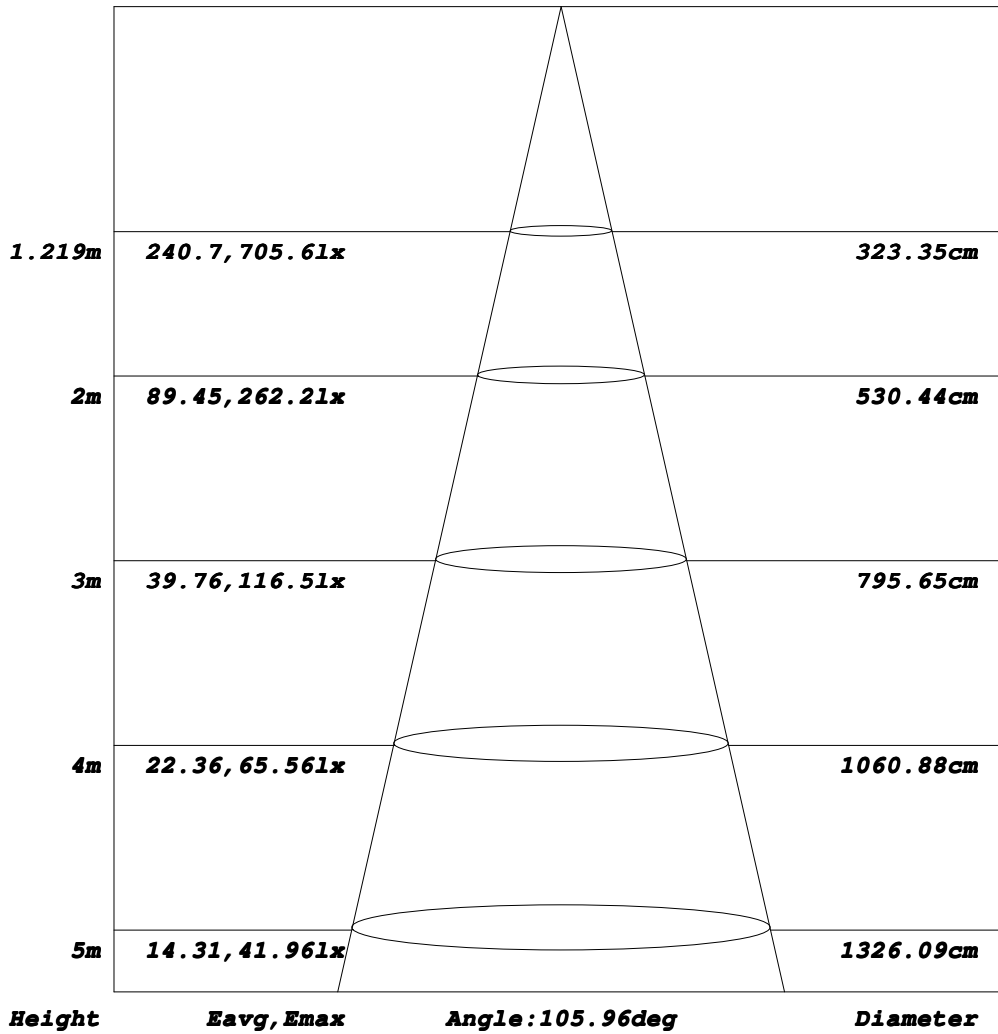
C Range: 0 - 360DEG
C Interval: 22.5DEG
Test Speed: HIGH
Temperature:20.4DEG
Operators:JK
Test Date:08 November 2016

γ Range: 0 - 180DEG
γ Interval: 0.5DEG
Test System:EVERFINE GO-2000B_V1 SYSTEM V2.0.351
Humidity:49%
Test Distance:8.300m [K=1.0000]
Remarks:

AAI Figure

Test:U:239.8V I:0.2069A P:38.73W PF:0.7806 Lamp Flux:3150.9x1 lm		
NAME: CADE Batten 40w	TYPE:LED Batten	WEIGHT:0.9
SPEC.:	DIM.: 1190 x 80 x 35	SERIAL No.:1
MFR.: Decrolux	SUR.:	Shielding Angle:

Flux out:1980 lm



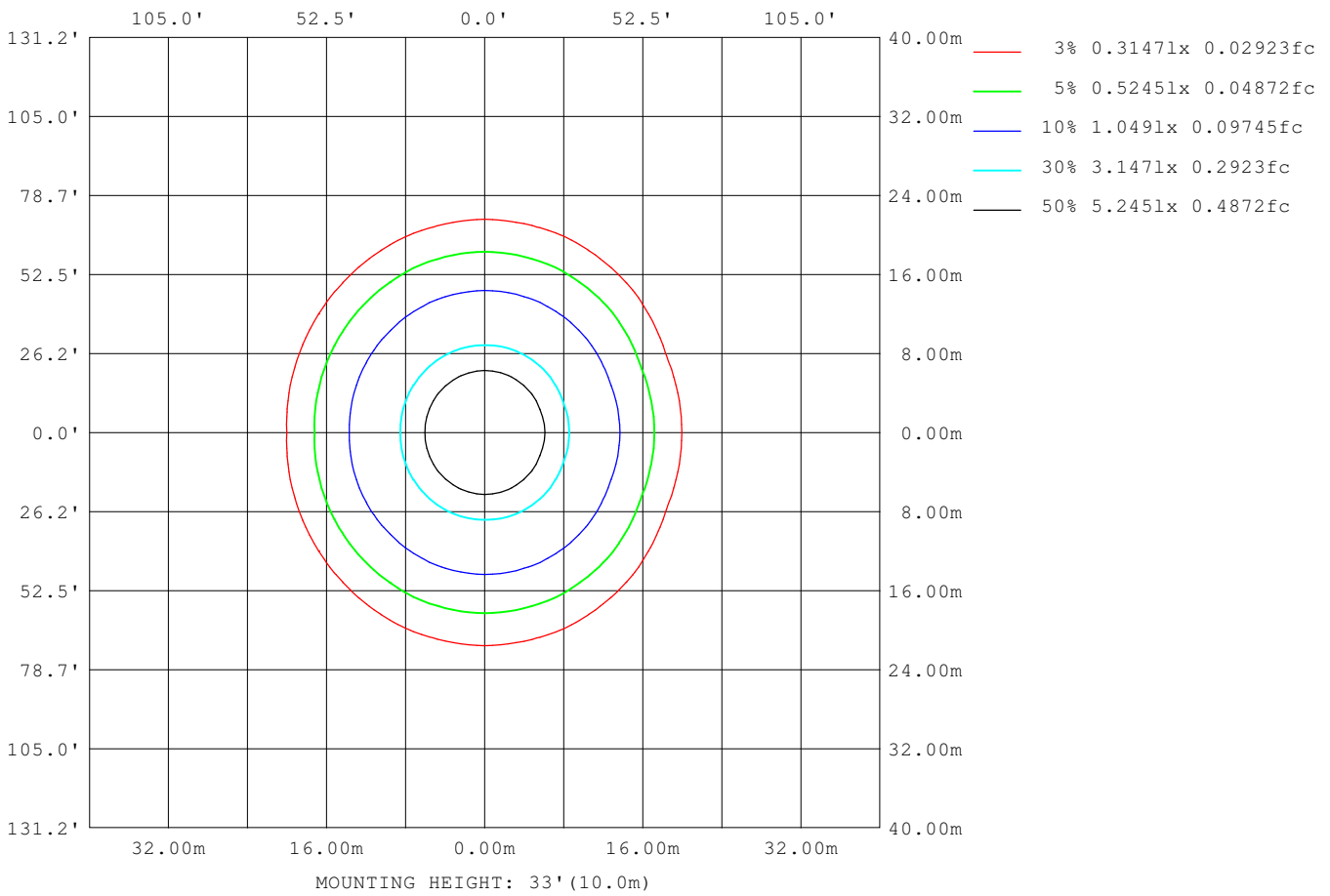
Note: The Curves indicate the illuminated area and the average illumination when the luminaire is at different distance.

C Range: 0 - 360DEG
C Interval: 22.5DEG
Test Speed: HIGH
Temperature: 20.4DEG
Operators: JK
Test Date: 08 November 2016

γ Range: 0 - 180DEG
γ Interval: 0.5DEG
Test System: EVERFINE GO-2000B_V1 SYSTEM V2.0.351
Humidity: 49%
Test Distance: 8.300m [K=1.0000]
Remarks:

ISOLUX DIAGRAM

Test:U:239.8V I:0.2069A P:38.73W PF:0.7806 Lamp Flux:3150.9x1 lm		
NAME: CADE Batten 40w	TYPE:LED Batten	WEIGHT:0.9
SPEC.:	DIM.: 1190 x 80 x 35	SERIAL No.:1
MFR.: Decrolux	SUR.:	Shielding Angle:



C Range: 0 - 360DEG
C Interval: 22.5DEG
Test Speed: HIGH
Temperature: 20.4DEG
Operators: JK
Test Date: 08 November 2016

γ Range: 0 - 180DEG
γ Interval: 0.5DEG
Test System: EVERFINE GO-2000B_V1 SYSTEM V2.0.351
Humidity: 49%
Test Distance: 8.300m [K=1.0000]
Remarks:

LED Avg.L Report

Test:U:239.8V I:0.2069A P:38.73W PF:0.7806 Lamp Flux:3150.9x1 lm		
NAME: CADE Batten 40w	TYPE:LED Batten	WEIGHT:0.9
SPEC.:	DIM.: 1190 x 80 x 35	SERIAL No.:1
MFR.: Decrolux	SUR.:	Shielding Angle:

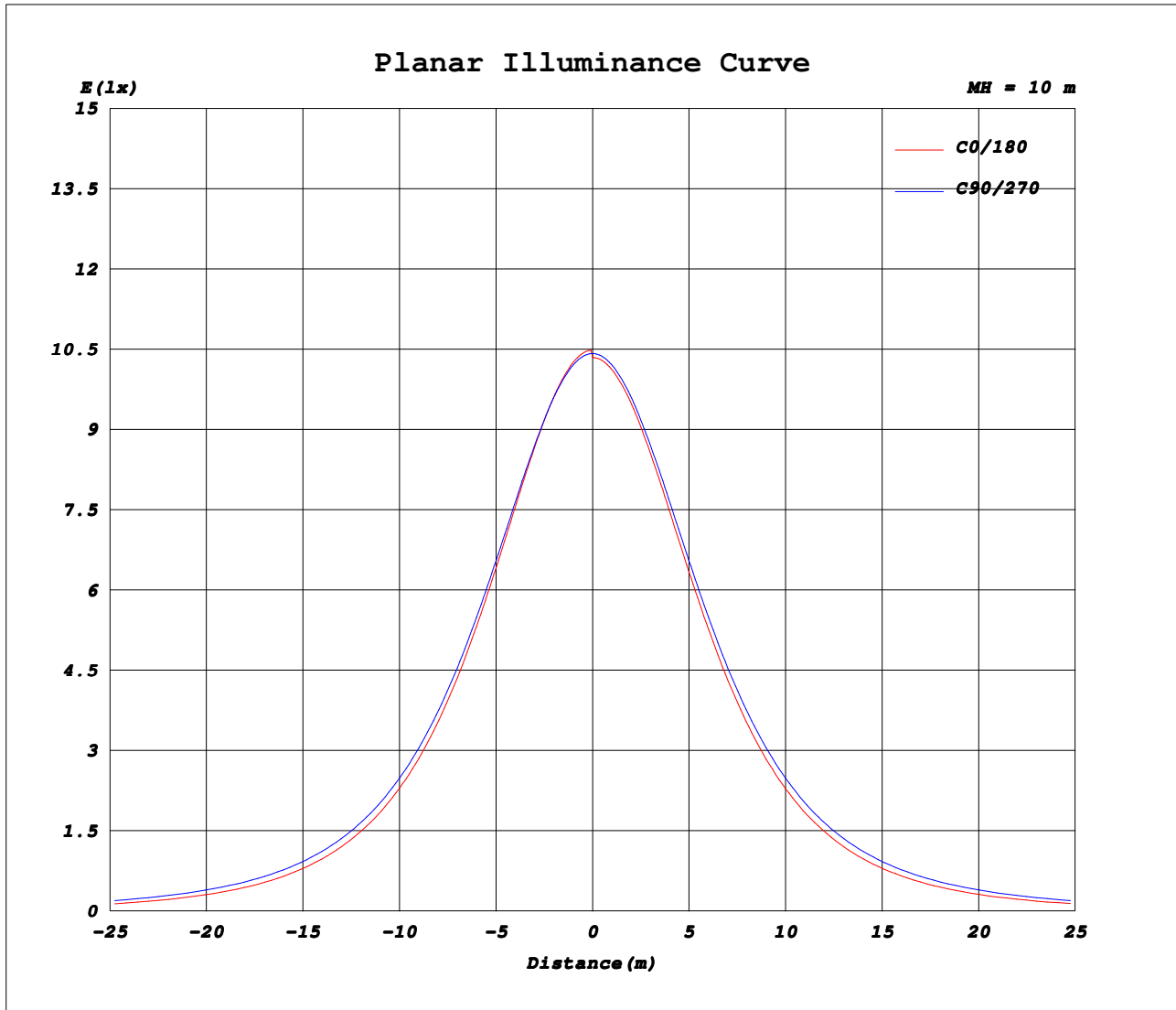
AvgL	cd/m2
L_0~180 (65) av	9690
L_0~180 (75) av	7624
L_0~180 (85) av	3222
L_90~270 (65) av	12677
L_90~270 (75) av	14381
L_90~270 (85) av	26825
L_45 (65) av	11333
L_45 (75) av	11771
L_45 (85) av	18770

Standard: GB/T 29293-2012

C Range: 0 - 360DEG
C Interval: 22.5DEG
Test Speed: HIGH
Temperature:20.4DEG
Operators:JK
Test Date:08 November 2016

γ Range: 0 - 180DEG
γ Interval: 0.5DEG
Test System:EVERFINE GO-2000B_V1 SYSTEM V2.0.351
Humidity:49%
Test Distance:8.300m [K=1.0000]
Remarks:

Planar Illuminance Curve



C Range: 0 - 360DEG
C Interval: 22.5DEG
Test Speed: HIGH
Temperature: 20.4DEG
Operators: JK
Test Date: 08 November 2016

γ Range: 0 - 180DEG
γ Interval: 0.5DEG
Test System: EVERFINE GO-2000B_V1 SYSTEM V2.0.351
Humidity: 49%
Test Distance: 8.300m [K=1.0000]
Remarks:

LUMINOUS DISTRIBUTION INTENSITY DATA

Test:U:239.8V I:0.2069A P:38.73W PF:0.7806 Lamp Flux:3150.9x1 lm		
NAME: CADE Batten 40w	TYPE:LED Batten	WEIGHT:0.9
SPEC.:	DIM.: 1190 x 80 x 35	SERIAL No.:1
MFR.: Decrolux	SUR.:	Shielding Angle:

Table--1

UNIT: cd

C (DEG) γ (DEG)	0	22.5	45	67.5	90	112.5	135	157.5	180	202.5	225	247.5	270	292.5	315	337.5			
0	1041	1041	1041	1041	1041	1041	1041	1041	1041	1041	1041	1041	1041	1041	1041	1041			
5	1035	1036	1036	1036	1036	1037	1036	1036	1035	1036	1036	1037	1036	1036	1036	1036			
10	1018	1020	1020	1022	1022	1023	1021	1020	1018	1020	1021	1023	1022	1022	1020	1020			
15	991	993	995	999	999	1000	996	993	991	993	996	1000	999	999	995	993			
20	953	956	961	967	968	968	962	958	954	958	962	968	968	967	961	956			
25	906	908	918	927	928	927	919	913	908	913	919	927	928	927	918	908			
30	851	851	868	879	881	879	868	860	853	860	868	879	881	879	868	851			
35	788	787	810	824	827	824	811	800	792	800	811	824	827	824	810	787			
40	719	717	746	764	767	763	747	734	724	734	747	763	767	764	746	717			
45	645	643	677	698	702	697	679	664	652	664	679	697	702	698	677	643			
50	568	566	605	629	634	627	607	589	575	589	607	627	634	629	605	566			
55	487	486	530	556	563	555	532	512	495	512	532	555	563	556	530	486			
60	404	404	452	484	493	483	456	432	413	432	456	483	493	484	452	404			
65	319	321	377	414	424	413	381	351	328	351	381	413	424	414	377	321			
70	235	239	306	346	357	345	308	271	243	271	308	345	357	346	306	239			
75	153	166	241	282	294	282	241	194	160	194	241	282	294	282	241	166			
80	78.1	112	180	224	237	224	181	126	82.8	126	181	224	237	224	180	112			
85	21.2	68.8	130	172	185	172	129	72.2	23.2	72.2	129	172	185	172	130	68.8			
90	1.53	35.0	86.9	127	140	127	86.5	34.6	1.47	34.6	86.5	127	140	127	86.9	35.0			
95	1.63	13.3	54.1	89.7	102	89.5	53.4	12.8	1.54	12.8	53.4	89.5	102	89.7	54.1	13.3			
100	1.90	3.41	25.1	55.1	67.1	54.6	24.3	3.25	1.88	3.25	24.3	54.6	67.1	55.1	25.1	3.41			
105	2.31	2.43	12.2	32.2	42.2	31.8	12.0	2.56	2.29	2.56	12.0	31.8	42.2	32.2	12.2	2.43			
110	2.75	2.79	4.45	16.7	23.1	16.5	4.42	3.02	2.73	3.02	4.42	16.5	23.1	16.7	4.45	2.79			
115	3.18	3.20	3.39	6.38	10.0	6.36	3.58	3.31	3.17	3.31	3.58	6.36	10.0	6.38	3.39	3.20			
120	3.62	3.60	3.65	3.91	3.99	4.02	3.92	3.62	3.60	3.62	3.92	4.02	3.99	3.91	3.65	3.60			
125	4.01	3.99	4.05	4.22	4.28	4.38	4.12	4.06	4.02	4.06	4.12	4.38	4.28	4.22	4.05	3.99			
130	4.44	4.41	4.45	4.57	4.61	4.76	4.51	4.49	4.44	4.49	4.51	4.76	4.61	4.57	4.45	4.41			
135	4.86	4.83	4.85	4.94	4.98	5.14	4.92	4.92	4.87	4.92	4.92	5.14	4.98	4.94	4.85	4.83			
140	5.25	5.22	5.24	5.30	5.32	5.52	5.32	5.33	5.28	5.33	5.32	5.52	5.32	5.30	5.24	5.22			
145	5.63	5.63	5.59	5.64	5.65	5.85	5.72	5.69	5.64	5.69	5.72	5.85	5.65	5.64	5.59	5.63			
150	5.99	6.01	5.94	5.96	6.00	6.13	6.08	6.06	5.99	6.06	6.08	6.13	6.00	5.96	5.94	6.01			
155	6.33	6.38	6.27	6.29	6.34	6.48	6.46	6.36	6.33	6.36	6.46	6.48	6.34	6.29	6.27	6.38			
160	6.67	6.71	6.58	6.60	6.66	6.82	6.74	6.67	6.66	6.67	6.74	6.82	6.66	6.60	6.58	6.71			
165	6.96	7.00	6.87	6.91	6.99	7.14	6.95	6.93	6.96	6.93	6.95	7.14	6.99	6.91	6.87	7.00			
170	7.17	7.24	7.12	7.17	7.26	7.34	7.15	7.15	7.17	7.15	7.15	7.34	7.26	7.17	7.12	7.24			
175	7.36	7.45	7.34	7.39	7.48	7.49	7.31	7.36	7.35	7.36	7.31	7.49	7.48	7.39	7.34	7.45			
180	7.49	7.53	7.47	7.53	7.67	7.52	7.40	7.45	7.46	7.45	7.40	7.52	7.67	7.53	7.47	7.53			

C Range: 0 - 360DEG
C Interval: 22.5DEG
Test Speed: HIGH
Temperature: 20.4DEG
Operators: JK
Test Date: 08 November 2016

γ Range: 0 - 180DEG
γ Interval: 0.5DEG
Test System: EVERFINE GO-2000B_V1 SYSTEM V2.0.351
Humidity: 49%
Test Distance: 8.300m [K=1.0000]
Remarks: